

3M™ Versaflo™ M-300 Helmet

Technical Data Sheet

Description

A lightweight air supplied helmet that provides respiratory, eye, face and head protection when suitably connected to an AS/NZS 1716 compliant air supply system.

Features

- Lightweight, with excellent balance
- Fully-adjustable suspension that includes textile straps for optimal fit and weight distribution
- M-300 headtop offers head protection to AS/NZS 1801
- Multiple size adjustment options allow for a comfortable fit
- An air deflector allows users to direct the airflow down or into the face for increased control and comfort
- Visor design combines excellent peripheral and downward vision with good optical clarity
- Coated polycarbonate visor provides added chemical and scratch resistance and high impact protection
- QRS (Quick Release Swivel) breathing tubes allow fast and easy snap on/off connection
- Easily removable parts allow simple cleaning, maintenance and replacement
- Most user interface/adjustment points highlighted in blue for convenience
- To suit a wide range of needs, industries and applications,
- 3M™ Versaflo™ M-Series headtops offer faceseals and shrouds in various fabrics
- Accessories include ear-muffs, peel-off's, various head covers and a cap lamp bracket
- A length-adjusting breathing tube is also available
- Many parts are common to all 3M™ Versaflo™ M-Series headtops, meaning reduced inventories and downtime

Applications

There are many workplace applications, including:

- Construction
- Grinding
- Foundries
- Heavy Industry
- Metal Fabrication
- Recycling
- Processing plants



M-307

M-307 w M-940 Cap lamp bracket

Suitable for use with TR-800 Turbo Unit, TR-300+ Turbo Unit, PF-600E-ASB, TR-600 Turbo unit and supplied air 3M Regulating V-Series Regulators and Valves
*Earmuffs additional accessory not included

Standards

The M-Series headtops meet the performance requirements of Australian Standard AS/NZS 1716:2012:

- when connected to the 3M™ TR-800, TR-600, TR-300+ and PF-600E-ASB.
- when connected to the 3M™ Air Regulating Valve or 3M™ Vortex™ Regulators.

AS/NZS 1337.1 compliant high impact eye/face protection.

AS/NZS 1801 Type 1 Industrial Safety Helmet.

AS/NZS 1270 when fitted with optional earmuffs.

Operation/Cleaning

Users need to be trained in the safe operation of this equipment. Routine checks must be carried out in accordance with the user instructions. Cleaning should also only be carried out as specified in the user instructions.

Specifications

Versaflo™ M-300 Helmet	
Weight	832g (without breathing tube)
Storage Conditions	-30°C to +50°C and <90% humidity
Operating Temperature	-10°C to +55°C and <90% humidity

Ordering Information

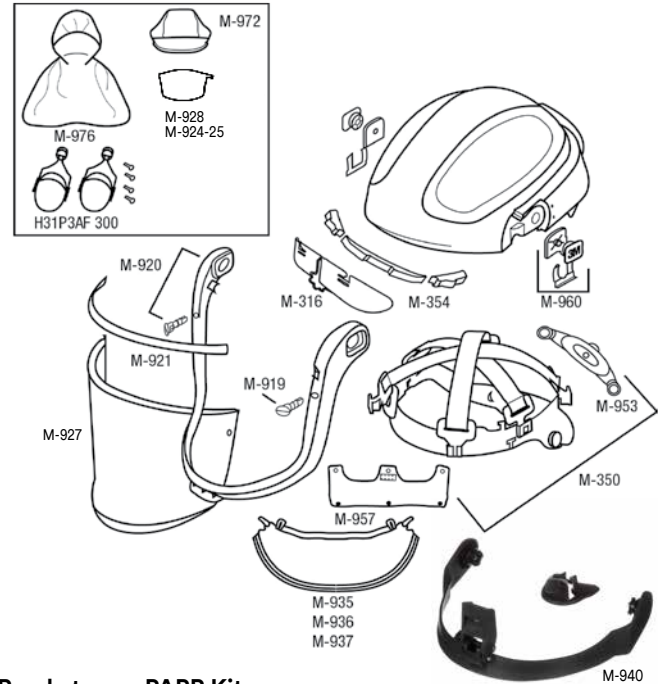
3M Code	Model #	Description
UU011469960	M-306	Versafo™ Helmet with coated visor and comfort face seal
70071562006	M-307	Versafo™ Helmet with coated visor and flame resistant face seal
AT019494759	M-307C	M-307 with M-940 Cap lamp bracket

Spare Parts & Accessories

3M Code	Model #	Description
70071564218	M-316	Airflow Deflector - 1 per case
70071564226	M-350	Head Suspension - 1 per case
70071564234	M-354	Forehead Seal - 1 per case
70071564309	M-919	Visor Frame Buttons - 10 per case
70071564317	M-920	Visor Frame Assembly - 1 per case
70071564325	M-921	Visor Gasket - 5 per case
UU003029442	M-927	Coated Visor - 5 per case
70071564341	M-928	Peel-Off Visor Covers - 40 per case
70071767332	M-924-25	Tinted Peel Peel-Off Covers M-924-25, for M-Series visors 25 EA/Case
UU003029202	M-935	Standard Face seal - 5 per case
UU003029418	M-936	Comfort Face seal - 5 per case
70071564374	M-937	Flame resistant Face seal - 5 per case
UU003029772	M-956	Size reducing Comfort Pad - 10 per case
XA007705925	M-957	Forehead Comfort Pad - 20 per case
70071564390	M-960	Visor Pivot Kit - 1 per case
UU003029434	M-972	Flame resistant head-top cover - 1 per case
UU003029780	M-976	Head, Neck, Shoulder Cover - 1 per case
AT010592841	H31P3AF	Earmuffs for M-Series Head Tops M-200 (20dB Class 3) M-300 (25dB Class 4)
70071564432	BT-926	Flame Resistant Breathing Tube Cover - 1 per case
70071766334	M-940	Mining cap lamp bracket kit 1/EA
XA007702625	Z3AF/2	Back plate kit for Versafo M-200 & M-300 Headtops to connect 3M Peltor P3 cap attach earmuffs

Important Notice

To the extent permitted by law, 3M shall not be liable for any loss or damage including any loss of business, loss of profits, or for any indirect, special, incidental or consequential loss or damage arising from reliance upon any information herein provided by 3M. Nothing in this statement will be deemed to exclude or restrict 3M's liability for death or personal injury arising from its negligence.



Ready to use PAPR Kits

3M Code	Model #	Description
AT010590548	TRM-307C	TR-300+ PAPR Kit which includes TR-302E+ Air filter unit, M-307 Headtop with flame resistant face seal, BT-30 Breathing Tube, TR-970 Air flow indicator, TR-332 Battery Pack, TR-341A Single station Battery charger, TR-3712E PAPR-P3 Particulate filter, TR-371+ Filter cover, TR-3600 Prefilter, TR-362E Spark arrestor, TR-325 Standard waist belt and S1303-0166 padded bag.
AT0109494742	CAPM-307	TR-300+ PAPR kit which includes TR-302E+ Air filter unit, M-307 Headtop with flame resistant face seal and reflective tape, M-940 cap lamp bracket, BT-30 Breathing Tube, TR-970 Air flow indicator, TR-332 Battery Pack, TR-341A Single station Battery charger, TR-3712E PAPR-P3 Particulate filter, TR-371+ Filter cover, TR-3600 Prefilter, TR-362E Spark arrestor, TR-325 Standard waist belt and S1303-0166 padded bag



3M Australia Pty Ltd
Personal Safety Division
 Bldg A, 1 Rivett Road
 North Ryde NSW 2113
 TechAssist Helpline: 1800 024 464
 Customer Service: 1300 363 565
 Email: techassist@mmm.com
 Web: www.3M.com/au/ppesafety

3M New Zealand Ltd
Personal Safety Division
 94 Apollo Drive, Rosedale
 Auckland 0632
 TechAssist Helpline: 0800 364 357
 Customer Service: 0800 252 627
 Email: techassist@mmm.com
 Web: www.3M.com/nz/ppesafety

3M and Versafo are trademarks of 3M Company.
 Please recycle. Printed in Australia.
 © 3M 2024. All rights reserved.
 AV011473178

